

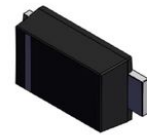
100V 2A SBD210D1 Schottky Barrier Diode/ Diodes 3000pcs -50- 125.C for Power Applications SOD-123FL

Our Product Introduction

for more products please visit us on socaydiode.com

Basic Information

- Place of Origin: GUANGDONG,China
- Brand Name: Socay
- Certification: RoHS
- Model Number: SBD210D1
- Minimum Order Quantity: 3000PCS
- Price: Negotiable
- Packaging Details: Tape & Reel
- Payment Terms: L/C, D/A, D/P, T/T, Western Union, MoneyGram



Product Specification

- Maximum RMS Voltage: 100V
- Maximum Forward Voltage At IF=2A: 70V
- Spq: 3000pcs
- Operating Temperature: -50-+125°C
- Ifsm: 50A
- Maximum Average Forward Rectified Current: 0.85V
- Thermal Resistance: 85 /W
- Storage Temperature Range: 100V
- Highlight: **SOD-123FL Schottky Barrier Diode, 100V Schottky Barrier Diode,**

Product Description

Product Description:

With a Vdc of 100V, this Schottky Barrier Diode can handle a wide range of voltage requirements in different electronic applications. It is also designed to operate in extreme temperatures, with an operating temperature range of -50-+125°C. This makes it suitable for use in a variety of harsh environments and demanding applications.

The Schottky Barrier Diode is sold in a standard packaging quantity (SPQ) of 3000pcs, making it an ideal choice for large-scale production runs. This also ensures that users have easy access to replacement parts in case of any failures or malfunctions.

One of the key features of this Schottky Barrier Diode is its maximum average forward rectified current of 2.0A. This allows it to handle high current loads without the risk of damage or failure. Additionally, it has a maximum RMS voltage rating of 28V, making it suitable for use in a variety of voltage applications.

Overall, the Schottky Barrier Diode is a reliable and versatile electronic component that is widely used in various electronic circuits. Its high forward surge current Semiconductor capabilities, coupled with its ability to handle high current loads and extreme temperatures, make it an ideal choice for a range of applications, including Bridge Rectifier Diode circuits.

Features:

Product Name: Schottky Barrier Diode

Case: SOD-123FL, Plastic

SPQ: 3000pcs

Vdc: 100V

Maximum RMS Voltage: 70V

Operating Temperature: -50-+125°C

Storage Temperature Range: -50-+150°C

Surface mounted Diode

High forward surge current Semiconductor

Surface Mount Schottky Barrier Rectifiers

Applications:

One common application scenario for this diode is in power supply circuits. It can be used as a rectifier to convert AC to DC in power supplies for electronic devices such as televisions, computers, and mobile phones. Another application is in battery charging circuits, where the diode can be used as a charging and discharging switch to protect the battery from overcharging and discharging.

The SBD210D1 diode can also be used in LED lighting circuits as a current limiter to protect the LED from overcurrent. It is also commonly used in motor control circuits to protect the motor from reverse voltage and in switching power supply circuits to improve efficiency.

With a Vrrm and Vdc of 100V and a storage temperature range of -50-+150°C, this diode is suitable for a wide range of operating environments and scenarios. It is manufactured in GUANGDONG, China and is known for its high quality and reliability.

In summary, the Socay SBD210D1 Schottky Barrier Diode is a versatile and reliable diode electronic component that can be used in a variety of applications, including power supply circuits, battery charging circuits, LED lighting circuits, motor control circuits, and switching power supply circuits. Its high efficiency, low forward voltage, and high average forward rectified current make it an ideal choice for many electronic applications.

Support and Services:

The Schottky Barrier Diode product technical support and services include:

- Assistance with product selection and application design
- Technical documentation and datasheets
- Sample requests for testing and evaluation
- Troubleshooting and problem-solving support
- Product training and education
- Warranty and repair services

FAQ:

Q: What is the brand name of this Schottky Barrier Diode?

A: The brand name of this Schottky Barrier Diode is Socay.

Q: What is the model number of this Schottky Barrier Diode?

A: The model number of this Schottky Barrier Diode is SBD210D1.

Q: Where is this Schottky Barrier Diode manufactured?

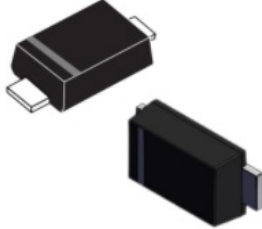
A: This Schottky Barrier Diode is manufactured in GUANGDONG, China.

Q: What is the maximum forward voltage of this Schottky Barrier Diode?

A: The maximum forward voltage of this Schottky Barrier Diode is 100V.

Q: What is the maximum continuous forward current of this Schottky Barrier Diode?

A: The maximum continuous forward current of this Schottky Barrier Diode is 2A.



 **Shenzhen Socay Electronics Co., Ltd.**

 +8618126201429

 sylvia@socay.com

 socaydiode.com

4/F, Block C, HeHengXing Science & Technology Park, 19 MinQing Road, LongHua District, Shenzhen City,
GuangDong Province, China